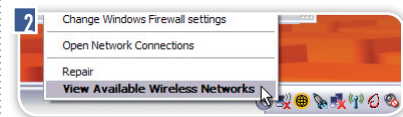


## TUTORIAL: CONNECTING TO A WIRELESS NETWORK

Using Windows XP Home Edition with Service Pack 2 on a wireless network enabled PC.

- STEP 1.** Make sure your wireless network adapter is on. Most newer PC laptops have a separate power button for their wireless adapters.
- STEP 2.** Right click the network connection icon in the notification area on the bottom right corner of your desktop. Click "View Available Wireless Networks."
- STEP 3.** In the "Choose a wireless network" section, click on the wireless network to which you want to connect.
- STEP 4.** If a network key (password) is required, type the key in the "Network key" field in the "Wireless Network Connection" window. Type it again in the "Confirm network key" field.
- STEP 5.** Click the "Connect" button and Windows will connect to the wireless network.



### 3 Choose a wireless network

Click an item in the list below to connect to a wireless network for more information.



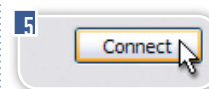
### 4 Wireless Network Connection

The network 'HPnet' requires a network key (also called a key helps prevent unknown intruders from connecting to

Type the key, and then click Connect.

Network key:

Confirm network key:



## TUTORIAL: WIRELESS NETWORK TERMS

### 802.11x

A series of specifications for wireless networking—currently IEEE 802.11b, 802.11a, and 802.11g. These standards permit wireless communication between a computer and an access point or between two computers.

### Access Point (AP or WAP)

A device that is connected to an existing network and acts as a hub to "connect" wireless communication devices together to form a wireless network. Many such devices can be connected together to extend the range of a wireless network.

### Bluetooth

A wireless technology that enables data connections over short distances between telephones, computers, PDAs, and other devices—such as printers and cordless mice.

### Hotspot (also Hot Spot)

A term used to refer to a place where users can access a wireless network service for free or a fee.

### WEP (Wired Equivalent Privacy)

A security protocol for encrypting data over an 802.11x wireless network. Due to exploits, WEP is less secure than the WPA security protocol.

### WiFi (also Wi-Fi, short for Wireless Fidelity)

A wireless networking standard based on the IEEE 802.11 specifications.

### WLAN (Wireless Local Area Network)

A network that allows computers to use wireless connections for high-speed data communication.

### WPA (Wi-Fi Protected Access)

A security protocol designed to replace WEP for encrypting data over an 802.11x wireless network.