

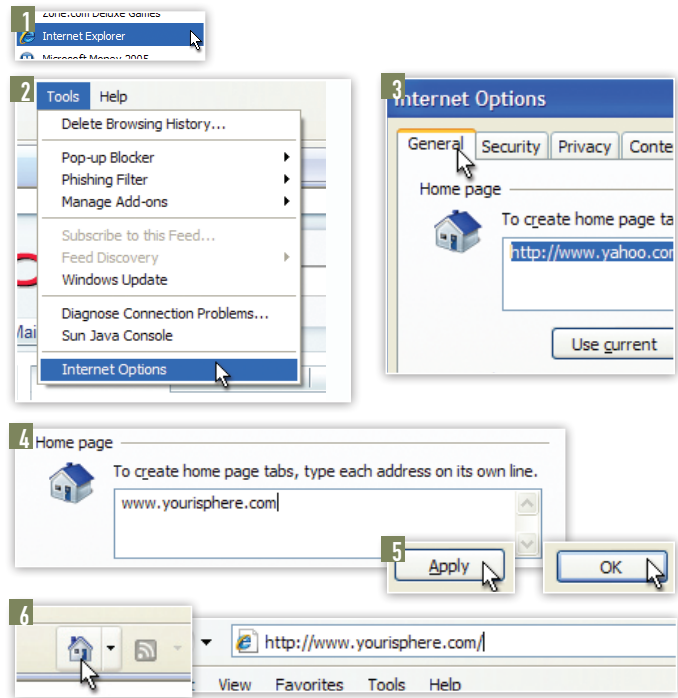
TUTORIAL:

## Making Your ISP's Home Page Your Start Page

Most Internet users find it helpful to use the home page of their Internet Service Provider as the page that appears when they first launch their Web browser each time a surfing session begins. If your start page/home page has been switched to another site and you'd like to change it to your ISP's home page, simply follow the instructions below.

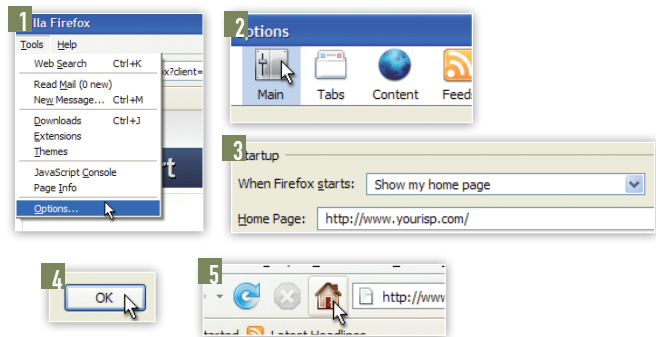
### When Using Microsoft Internet Explorer 6 Browser Software and Windows XP:

- STEP 1. Open Internet Explorer.
- STEP 2. Click your cursor on "Tools" in the menu bar. Drop down to "Internet Options."
- STEP 3. When the "Internet Options" window opens, make sure the "General" tab is selected. You will know that it is selected because it will appear in front of the others.
- STEP 4. From the General Tab under "Home Page," hit the delete key on your keyboard to erase the URL (web address) that is already there, and then type in the web address of your ISP.
- STEP 5. Click your cursor arrow on "Apply" then click "OK."
- STEP 6. To test, click your cursor arrow on the "Home" button of your browser's toolbar. This should load your new start page.



### Here's how it works in Firefox:

- STEP 1. With the Firefox browser open, click the "Tools" menu and select "Options."
- STEP 2. In the "Options" dialog box that appears, click the "Main" tab.
- STEP 3. Under "Startup" on the "Main" tab, type your ISP's home page web address in the "Home Page" box. For example, type www.yourisp.com.
- STEP 4. Click the "OK" button.
- STEP 5. Click the home page icon (the little house), and the browser will display the new home page.



### Here's how it works in Safari:

- STEP 1. Open Safari.
- STEP 2. Click your cursor arrow on "Safari" in the menu bar. Drop down to and select "Preferences."
- STEP 3. When the "Preferences" window opens, select the "General" icon at the top.
- STEP 4. Look for the "Home page" field. Select the current URL (web address), delete it, and then type in the web address of your ISP's home page.
- STEP 5. Click on the red circle in the upper left corner of the window to close it.
- STEP 6. Click your cursor arrow on the "Home" button on the Safari toolbar. It should take you to our home page.

